

# TOWN END JUNIOR SCHOOL



# NEWSLETTER

SEPTEMBER  
2025

## Welcome to our September newsletter!

Dear Parents/ Carers,



Welcome back everyone, and a big welcome to our new starters – we are looking forward to seeing you all on Monday morning, and we hope you all had a wonderful summer break. We are always incredibly proud of the children at Town End – they have fantastic learning attitudes and manners, and I cannot wait to see what they all achieve this year. I would like to welcome Mr Austin (who is covering maternity leave in year 3/4) and Mrs Barrett (in year 5/6). We are excited to welcome them to our Town End team! I would also like to say a huge congratulations to Miss Riley, who is expecting a new little arrival! She will be with us for the first part of the year, working with groups across the school before she goes on Maternity Leave. towards Christmas.

We have lots organised for this year and are looking forward to seeing everything our children achieve. If you have any questions or worries, please speak to your child's class teacher, who will be available at the end of the day or can be contactable via the office. Each morning, myself, Mrs Boswell and Mrs Hodson will also be on the gate for any messages you would like to be passed on – please do speak to one of us if you need anything!

Best wishes,  
Mr Weston  
(Head of School)

Welcome  
BACK to  
SCHOOL

## Reminder: Nut-free school



Please can we remind our families that we are a nut free school. Please can we ask that that any snacks and food bought into school does not include any nuts due to pupils in school having severe allergies to these.

Children can bring in a healthy snack for breaktimes (fruit, healthy nut-free bars etc.). We also offer a fruit tuck shop at break – all fruit is sold for 20p.

Thank you for your support.

# Morning and End of Day Routines



## Morning Routines:

The side gate will be opened at 8:35 by Mrs Hodson and Mr Weston. Children are then asked to go straight to their classrooms and put away their things on their pegs. During the first week, extra staff will be in the corridors to help and support children who may be nervous. The gates are closed at 8:45.

## School Bus – morning only.

The school bus also runs in the morning – please note this is not run by Town End and although does sometimes have staff on, this is not always the case. The cost is 60p and is paid directly to the driver. Any lost property left on the bus is returned to the depot and will need to be collected after contacting Redfern Travel.

## Breakfast Club:

If your child is attending breakfast club (which runs 7:30–8:35 and can be booked via Arbor), please come to the small side gate and press the doorbell – a member of staff will greet you here..

## End of the Day Routines:

We open the playground gate at 3:10 for parents to come onto the playground and children are dismissed from 3:15. Mr Weston and Mrs Hodson are on the gates daily. The gates are closed at 3:25. If you are collecting your child after this time, please go to the small gate and press the door bell here, and a member of staff will come to you.

- Year 3 and 4 parents: please walk around the building onto the big playground. Children will be dismissed by their teacher from here.
- Year 5 and 6 parents: please wait on the small playground (straight after the gate). Teachers will dismiss directly to here.
- If your child is walking home, please can you ensure a letter/ note in reading records is provided – we will not let children go without this and will need to ring to confirm.
- If there is a change in adult collecting, please let us know as we will need to check with you before releasing.

## After Care:

If your child is attending after care (which runs until 5:15 and booked via Arbor), please collect from the small side gate. Please ring the bell and a member of staff will bring your child to you.

## After School Sports Clubs:

These finish at 4:15 and children are dismissed from the front main entrance. If your child has permission to walk home, please ensure there is a note in their reading record to be shown to the adult running the club.



## Morning Snack

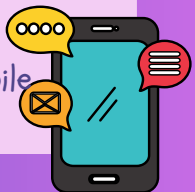
Unlike at the Infant school, children are not provided with a free morning snack when they enter year 3. Children are encouraged to bring a healthy snack into school (fruit, cereal bars, bread sticks etc.) but we ask that all snacks are nut free please. If children do bring in snacks which contain nuts, they will be asked to put them away due to severe allergies.

We also run a fruit tuck shop each morning break – all fruit is 20p. If you would prefer your child to pay for the whole week, they can also pay £1 on a Monday and this will be noted at the tuck shop.

## Mobile Phones

We understand that there may be times your child will need to bring in a mobile phone to school (if walking home etc.) While we strongly encourage children not to, if your child does need to bring their phone into school, this must be handed in and switched off at the start of the school day to their class teacher. They will be locked away and handed out at the end of the day. If your child is bringing in their phone please complete the consent form on Arbor – this is within the student profile and consents. .

As a school, we unfortunately cannot be held responsible for any loss or damage to mobile phones, as school insurance will not cover these items.



## Year 6 Parents – Apply for your child's Year 7 place.



Applications open on 8<sup>th</sup> September for parents of children in year 6 to apply for their child's year 7 place, ready for September 2027.

Parents must apply via the Derbyshire County Council Website ([linked here](#)) by midnight on 31<sup>st</sup> October.

## Tibshelf and Frederick Gent Open Evenings



Tibshelf Community School are holding an open evening for year 5 and 6 pupils and parents on Thursday 2<sup>nd</sup> October from 5 – 7pm.

Frederick Gent are also holding an open evening on Thursday 2<sup>nd</sup> October 5–7pm and can be booked onto via [this link](#).

## Uniform

Please can we ask that all belongings are labelled with your child's name – this helps us to get everything back to its owner!

### Our uniform:

- Burgundy sweatshirt or cardigan – branded with school logo or unbranded.
- White polo shirt or burgundy polo shirt branded with school logo or unbranded.
- Black/Grey smart trousers or smart shorts
- Black/Grey skirt or pinafore with socks or tights
- Burgundy gingham dress, or playsuit, with socks
- Black school shoes (without a heel) or black trainers (plain).



### PE Kit:

For PE, we ask that children wear black shorts/ joggers and a PE top which is the colour of their house (red, blue or green). Children should also wear trainers and may bring in a plain hoody during colder weather.

Please can we ask that children do not come into school in sports tops for PE – they are often damaged or lost and this causes upset.

### Bags and Pencil Cases:

Space for storage is limited at Town End. We therefore ask for children not to bring in large bags into school due to lack of storage space. Please could children bring in a book bag or a very small drawstring bag with their belongings in to ensure everything can fit into cloakrooms.

Children also do not need a pencil case, as we provide all stationery needed in lessons.



## Year 5 Swimming

This year, children in year 5 will be swimming. The children will be split into two groups, with each group going for 7 weeks. You will be informed of your child's group and the dates for their lessons in the next few days.

Swimming days will be on a Monday, with lessons taking place in the afternoon. They will leave school by coach and have their lessons at Alfreton Leisure Centre. Children will be back in school by the usual end of day time.

For the swimming lessons, children will need: a waterproof bag, towel and close fitting swimming costume/ shorts. They may wear goggles. Long hair must be tied up or covered with a swim cap, and all jewellery and watches must be removed.

## PE and Forest School

On PE days, children should come in their PE kit – trainers, black shorts and t shirt that is their house colour (green, red or blue). In colder weather, children may wear black joggers and a plain black hoody.

On Forest School days, children should come in their PE kit, with a suitable pair of shoes and weather appropriate clothes in a bag please.

Days for Forest School and PE are as follows:

Class	PE Day	Forest School Day
Mr Smith	Thursday	Wednesday
Mrs Crabtree/ Miss Birch	Friday	Wednesday
Mrs Hoskyns/ Mr Austin	Friday	Wednesday
Mrs Barrett	Monday	Tuesday
Mrs Taylor/ Mr Dovey	Monday	Tuesday
Mr Batchford	Monday	Tuesday

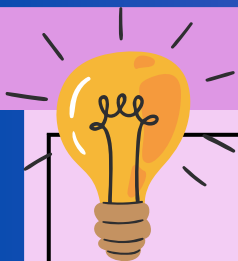


## Clubs



Please see clubs for this term. We will also be adding extra lunch clubs over the next few weeks.

	Lunch Clubs (No cost for these clubs)	After School Clubs (Paid via Arbor App)
Monday	Book Swap Shop (Morning break with Mrs Hodson)	Multi Sports with Owen
Tuesday		Girls' Football with Owen
Wednesday	Construction and Animation club with Mr Weston (from 12:30)	Cross Country with Mrs Hodson and Mr Smith
Thursday		Boys' Football with Owen
Friday		No club



## What will my child be learning this term?

	Maths	English	History/ Geography	Science	RE/ PSHE
Year 3 and 4	We will be learning about place value of numbers to 10,000. We will then begin to explore addition and subtraction.	<p>We will be reading <i>Leon and the Place Between</i> by Angela McAllister and using this to create our own stories.</p> <p>We are also reading: <i>The Lost Spells</i> by Robert MacFarlane in Guided Reading.</p>	We are heading back in time to find out all about The Romans and their impact on Britain.	We will be learning about sound and how we can hear sounds, including the parts of the ear.	<p>PSHE: Being me in my world – exploring what makes us special and getting used to new classes and routines.</p> <p>RE: What does it mean to be a Hindu?</p>
Year 5 and 6	We will be exploring numbers to 10 million before applying this knowledge in addition, subtraction, multiplication and division problems.	<p>We will be reading <i>Goodnight, Mr. Tom</i> by Michelle Magorian.</p> <p>We will create character descriptions based on Mr Tom, before creating reports about the Blitz..</p> <p>In Guided Reading, we will continue to explore reading strategies in our daily lessons.</p>	We are learning about Britain from the 1930s, the Second World War and the impact it had on Tisbury and Britain.	We are exploring the body, focussing on the heart and the circulatory system..	<p>PSHE: Being me in my world – exploring what makes us special and getting used to new classes and routines..</p> <p>RE: Why do people think God exists?</p>

We have also uploaded long term plans onto the school website, where you will be able to see your child's learning during their time here at Town End.

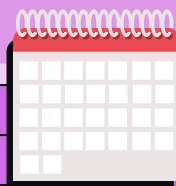
To access this, please follow [this link](#).





# Upcoming Dates and Events

DATES IN RED ARE DATES WHERE PARENTS ARE INVITED INTO SCHOOL



Date	Event
Autumn 1 2025	
Monday 8 <sup>th</sup> September	Children back in school – gates open at 8:35
Tuesday 9 <sup>th</sup> September	Parent Meeting for Y6 Residential at 3:30 in Mr Batchford's Room
Monday 29 <sup>th</sup> – Wednesday 1 <sup>st</sup> October	Y6 Residential to Newby Wiske
Thursday 2 <sup>nd</sup> October	Colour Run and Sports Partnership Activities
Friday 10 <sup>th</sup> October	Harvest Festival at Tibshelf Church (pm) – more info to follow.
Tuesday 21 <sup>st</sup> and Thursday 23 <sup>rd</sup> October	Parents' Evenings – more info to follow closer to the date.
Wednesday 22 <sup>nd</sup> October	Mrs Crabtree/ Miss Birch's Class Parent Dinner
Thursday 23 <sup>rd</sup> October	Flu Immunisations (consent forms sent directly from NHS)
Friday 25 <sup>th</sup> October	Break up for half term at 3:15
Autumn 2 2025	
Monday 3 <sup>rd</sup> November	Back to school for children
Wednesday 19 <sup>th</sup> November	Individual Pupil Photographs – all children in uniform please.
Wednesday 19 <sup>th</sup> November	Mrs Hoskyns and Mr Austin's Class Parent Dinner
Monday 1 <sup>st</sup> December	Elf Enterprise Day – information to follow
Monday 8 <sup>th</sup> December	Federation Christmas Fair at Town End – info to follow.
Friday 12 <sup>th</sup> December	Whole School Panto Trip – info to follow.
Monday 15 <sup>th</sup> December	Whole School Trip to EIS – info to follow.
Wednesday 17 <sup>th</sup> December	Christmas Performances at Tibshelf Church (pm) – more info to follow.
Friday 19 <sup>th</sup> December	Break Up for Christmas at 3:15
Spring Term 1 2026	
Monday 5 <sup>th</sup> January	Children back to school.
Wednesday 21 <sup>st</sup> January	Mr Smith's Class Parent Dinner
Friday 13 <sup>th</sup> February	Break up for half term at 3:15
Spring Term 2 2026	
Monday 23 <sup>rd</sup> February	Children back to school
Friday 6 <sup>th</sup> March	INSET Day
Wednesday 18 <sup>th</sup> March	Mrs Barrett's Class Parent Dinner
Friday 27 <sup>th</sup> March	Break up for Easter at 3:15
Summer Term 1 2026	
Monday 13 <sup>th</sup> April	Children back to school.
Monday 11 <sup>th</sup> – Thursday 14 <sup>th</sup> May	Year 6 SATS Assessment Week
Wednesday 20 <sup>th</sup> May	Mrs Taylor and Mr Dovey's Class Parent Dinner
Friday 22 <sup>nd</sup> May	INSET Day and Break up for half term.
Summer Term 2 2026	
Monday 1 <sup>st</sup> June	INSET Day
Tuesday 2 <sup>nd</sup> June	Children back to school
Wednesday 10 <sup>th</sup> June	Mr Batchford's Class Parent Dinner
Monday 13 <sup>th</sup> July	Sports Day (to be confirmed closer to the time)
Thursday 23 <sup>rd</sup> July	Break up for Summer at 3:15