

Thursday 8th December 2022

Dear Parents/Carers,

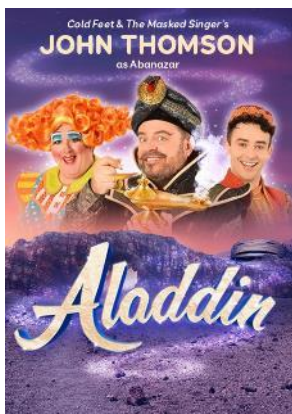


Town End Christmas Fayre, tomorrow 1.30 – 3pm. If you have children at The Infants, you may collect them from 1.15pm for you to enjoy these festivities at the end of the school day.

Please enter and leave Town End through the gates at the side of school, these will be open from 1.30pm. Once you collect your Junior School child from their classroom it is expected that they will become your responsibility for the rest of the time they are on the school site, and they will leave with you when you leave. If you are not attending The Christmas Fayre/collecting your child, please make sure they are clear about how they are getting home when school ends at 3.15pm.

THE FRIENDS CHRISTMAS SHOP: Your child will have the opportunity to visit The Christmas Shop over the next couple of weeks if you returned their envelope detailing the presents they needed to buy. These can still be sent into school if you missed the deadline.

HOME SCHOOL DIARIES: IF YOU PUT A NOTE IN YOUR CHILD'S HOME/SCHOOL DIARY, PLEASE TELL YOUR CHILD THAT THEY NEED TO SHARE THIS WITH THEIR CLASS TEACHER. TEACHERS ARE NOT ABLE TO CHECK EVERYONE'S DIARY EVERY DAY.



PANTOMIME: This year our pantomime day is on Tuesday 20th December. All children in school have a seat booked, the cost per child is £13. If your child is in receipt of Pupil Premium funding school will pay, but you must complete the consent form. Your child will need to bring a packed lunch as we will not be back at school till close to the end of the day. A packed lunch can be provided by school for pupils in receipt of Pupil Premium funding, please let us know as soon as possible if you would like this arranging for your child.

BREAKFAST CLUB & AFTER SCHOOL CARE: You can book these sessions through School Gateway app. If you have any problems with this please let us know by text message or by email. Sessions must be booked in advance whenever possible to ensure adequate staffing.

CHRISTMAS DATES FOR YOUR DIARIES:

EVENT & DAY	YEAR 3	YEAR 4	YEAR 5	YEAR 6
Friday 9 th December 1.30pm-3pm, Christmas Fayre at Town End Juniors	😊	😊	😊	😊
Wednesday 14 th December, Carols at church – 9.30am Years 5 & 6 – 2pm Years 3 & 4 – parents welcome	😊	😊	😊	😊

Thursday 15 th December, Pantomime Dance Workshops (West End in Schools) CINDERELLA	😊	😊	😊	😊
Monday 19 th December, Christmas lunch	😊	😊	😊	😊
Tuesday 20 th December, Pantomime at The Derby Playhouse for all children in school <i>(School will pay for children in receipt of Pupil Premium funding but you must complete the online consent form)</i>	😊	😊	😊	😊
Thursday 22 nd December, Break up for Christmas holidays – collection from 1.15pm	😊	😊	😊	😊

MOBILE PHONES: We do not encourage children to bring mobile phones into school, however we respect that you may want your child to carry a mobile phone if they are walking to/from school. If your child brings a mobile phone or any other personal electronic device to school they must bring it up to the office when they arrive in school. The phone will be held securely until the end of the day when they may collect it just before they leave school. Personal mobile devices must not be used on the school site; if your child needs to contact you before they leave the site they will be able to use the school landline.

WATER BOTTLES: Please make sure your child comes to school every day with a bottle of fresh water. Please make sure your child gets into the habit of bringing their water bottle home after school so it can be refilled. Water bottles should be clearly named so your child can easily identify their bottle. **YOUR CHILD SHOULD ONLY HAVE WATER IN THEIR WATER BOTTLE. BOTTLES ARE ABLE TO BE REFILLED DURING THE SCHOOL DAY.**



UNIFORM: Uniform for both schools can now be ordered through the website under the tab “Tibshelf Schools” or you [can click here to place an order](#)

A lot of high street stores stock burgundy uniform, if that is a preferable option for you. Pre-owned uniform can be purchased or exchanged in the cabin at Tibshelf Infants & Nursery School; there is a large amount of stock there (including larger sizes) in the boxes and hanging on the rail. This can be brought to Town End on request.

We keep a good stock of uniform at Tibshelf Infants, so usually what you have ordered will be at Town End within a couple of days. When you have paid your child’s uniform will be given to them, but please remind us if this has not happened.

PLEASE MAKE SURE ALL UNIFORM IS CLEARLY NAMED AS THERE ARE ABOUT 200 CHILDREN IN SCHOOL CURRENTLY. Please also encourage your child to look after and respect their uniform; we will also do this in school as we know how many items of clothing are mislaid over a school

week and end up in the lost property box. You are always welcome to check this; it is located just inside the doors off the small playground outside the wheelchair accessible toilet.

Please make sure your child comes to school every day with a waterproof and weatherproof coat. **NO SCARVES PLEASE.**

Please find a list of dates below for the coming year. These will be added to as other events are arranged so please keep checking them on a weekly basis.

Day, date, time	Event
Friday 9 th December, 1.30 – 3pm	Town End Christmas Fayre
Wednesday 14 th December 9.30am & 2pm	Christmas carols at church – parents/carers welcome to join 9.30am – Year 5/6 2pm – Year 3/4
Tuesday 20 th December	Pantomime at The Derby Playhouse, Aladdin – ALL CHILDREN WILL NEED TO BRING A PACKED LUNCH (if your child is in receipt of Pupil Premium funding school will provide a packed lunch if requested in advance)
Wednesday 21 st December	Santa visiting school
Thursday 22 nd December	School break up for Christmas, collection from 1.15pm – no After School Care
Monday 9th January	Return to school, Spring Term 1
Monday 27 th February 2023	INSET Day, Focus TBA
Monday 26 th June 2023	INSET Day, Focus TBA

Holidays during term time - You should not normally take your child on holiday during term time. GOV.UK has information on [what the law says about school attendance and absence](#).

Your child's safety, well-being and happiness will always be a top priority for us throughout the year. If there is something worrying your child, please let us know – little things can quickly escalate if they are not dealt with. If you are not able to speak to your child's class teacher at the beginning of the day please feel that you can catch me, Mrs. Alton or Chris or catch me around school if you have any concerns or worries about anything you feel may affect your child's education. It is very important we are kept informed so that we can ensure your child receives the best care and education. Please also remember to let us know if your immediate contact details change, especially mobile phone numbers.

If you ever need to make contact with school after we have closed please be aware that you can send a text via School Gateway App or by email, ZAndrews@townend.derbyshire.sch.uk I will usually pick up messages from both or one of these sources until about 9pm, and of course, if you need me to, I will contact you. Sometimes there may be something worrying or upsetting your child and you might not be able to get to the bottom of it – please do not feel you have to worry all night!

You can log onto our website at www.townend.derbyshire.sch.uk or contact us via email info@townend.derbyshire.sch.uk or ZAndrews@townend.derbyshire.sch.uk, or phone **01773 872306**. If we are not in the office when you phone you will hear a lovely answer phone message from one of our Year 6 pupils – just leave your message and we'll get back to you. Weekly newsletters can also be found on our website.

Have a good week,

Zoë