

Thursday 17th November 2022

Dear Parents/Carers,

Following a rigorous and timely recruitment process by joint school governors the appointment for the Interim Executive Headteacher across Tibshelf Infants & Nursery School and Town End Junior School has been made. On behalf of the Governors, I am delighted to announce that Mrs. Rachel Boswell will be taking over the role in January. Currently Rachel is the headteacher at Blackwell Primary School, and because of this I have worked closely with her over the years as part of the 5 Pits Partnership of Schools. There will be several weeks now for us to liaise so there is a smooth transition for her, and she feels well informed about the two schools, and all the wonderful things that are happening across them.



TOMORROW: BBC Children in Need 2022, Together, We Can – Wear something yellow or Spots, or come to school in Pudsey clothing, £1 donations very gratefully received. School uniform is not required tomorrow.



CLOTHING COLLECTION TUESDAY 22nd NOVEMBER: Whether you just cleaned out your wardrobe, your kids have outgrown their clothes, or you want to raise money for your local school or charity, why not consider getting cash for your clothes?

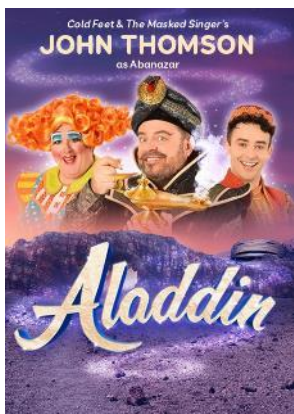
FOOTBALL WORLD CUP: Next Thursday your child can come to schools in sport's kit to celebrate the first week of the World Cup. 😊

THE FRIENDS CHRISTMAS SHOP: Earlier this month your child should have brought home a personalised envelope – if were in a club, in after care or absent their envelope will be in the cabin for you to collect. A shop will be set up in school with small gifts that children can chose to buy for family, friends, pets. The gift will be wrapped and labelled (with who it is for and who it is from) and your child will bring these home to put under the Christmas tree. Each gift is £1. Your child will then 'go shopping' with a member of staff when their class has 'the shop'. If you would like your child to take part, please complete the front of the envelope (if you want to add more people/dogs/cats please continue on the back) and return to school by **24th November**.

UNIFORM: If your child does a club or has P.E. they may come to school in their P.E. kit. If they prefer to wear uniform and change, that is fine.

SCHOOL PHOTOS: Just a reminder to place your order for photographs as soon as possible. Everybody who makes an order with us will automatically be entered into our Easter Prize Draw, **where the winner will receive a brand new bike!**

HOME SCHOOL DIARIES: IF YOU PUT A NOTE IN YOUR CHILD'S HOME/SCHOOL DIARY, PLEASE TELL YOUR CHILD THAT THEY NEED TO SHARE THIS WITH THEIR CLASS TEACHER. TEACHERS ARE NOT ABLE TO CHECK EVERYONE'S DIARY EVERY DAY.



PANTOMIME: This year our pantomime day is on Tuesday 20th December. All children in school have a seat booked, the cost per child is £13. If your child is in receipt of Pupil Premium funding school will pay, but you must complete the consent form. There are some seats available for adults of children in school if you would like to join us. These extra seats will be allocated on a first come basis. We will let you know when they are on School Gateway to book. Your child will need to bring a packed lunch as we will not be back at school till close to the end of the day. A packed lunch can be provided by school for pupils in receipt of Pupil Premium funding, please let us know as soon as possible if you would like this arranging for your child.

ONLINE SAFETY: Keeping your children safe online in school, and educating them about how to stay safe online at home is a key focus for us. All staff have had the required annual training this month. You can support us by being aware of and engaging with games they are playing and their online activity so that they can talk to you about what they are accessing and sharing online. You can find more information in relation to online safety at

<https://www.thinkuknow.co.uk>

internetmatters.org

<https://nspcc.org.uk>

COMMUNITY HELP
WINTER 2022

WARM BANK **TIBSHELF VILLAGE HALL**

Starting from 1st November, Tibshelf Village Hall will open its doors to the public on Tuesday afternoons, 12:30pm to 3pm, each week of the winter. This is initially to test demand, and could be extended to more days and times if needed. The Hall will offer a warm space so that people can turn off their heating for a few hours. Join us for bingo, pub quiz, board games and a children's toy corner. We ask that residents in genuine need attend, although we will not turn people away.

COMMUNITY CAFE **TIBSHELF VILLAGE HALL**

A Community Café will be open at the Village Hall during the Warm Bank and operating out of kitchen hatch. It is planned this will provide teas and coffees, as well as food being on offer. It too will initially test demand and would be extended if the Warm Bank is. We also ask that residents in genuine need attend, although none will be turned away.

Town End Junior School – Alfreton Road, Tibshelf, Derbyshire, DE55 5PB
www.townend.derbyshire.sch.uk 01773 872306 info@townend.derbyshire.sch.uk

Executive Headteacher: Zoë Andrews

BREAKFAST CLUB & AFTER SCHOOL CARE: You can book these sessions through School Gateway app. If you have any problems with this please let us know by text message or by email. Sessions must be booked in advance whenever possible to ensure adequate staffing.



AFTER SCHOOL CLUBS FOR THE AUTUMN TERMS CAN BE BOOKED FROM THROUGH THE APP. ALL CLUBS 3.15-4.15pm & ARE £4 PER SESSION. YOU NEED TO BOOK FOR THE TERM – PAYMENTS CAN BE MADE WEEKLY OR TERMLY. COLLECTION AFTER CLUBS FROM THE FRONT DOOR PLEASE. The

last day for clubs next term will be Tuesday 13th December. IF THE CLUB IS RUN BY A MEMBER OF STAFF THE LAST DAY FOR CLUBS IS THURSDAY 8th DECEMBER.

Monday – Energise with Mr. Smith

Art with Mrs. Crabtree

Glee (singing and dance) with Mrs. Hoskyns – lunchtime club (no charge)

Tuesday – Year 3/4 Multi Sports with Mrs. Hodson

Gymnastics with Kelly (KJ Dance & Cheer)

Wednesday – Maths Puzzle Club with Mr. Batchford

Thursday – Year 5/6 Cardio Fit with Mrs. Hodson

Computer Coding with Mr. Sharpe – lunchtime club (no charge)

12-12.30pm Year 5/6 & 12.30-1pm Year 3/4

CHRISTMAS DATES FOR YOUR DIARIES:

EVENT & DAY	YEAR 3	YEAR 4	YEAR 5	YEAR 6
Christmas Shop – complete your child’s envelope & return to school with the correct money by Thursday 24th Nov.	😊	😊	😊	😊
Friday 2nd December at Tibshelf Infants, from 8am-9am and from 2pm – Friends Christmas Market with Santa & his reindeer, Christmas ice-cream van, stalls and gifts.	This event is for all children to attend if accompanied by a grown up at the start or end of the school day. Junior School children can visit at the start of the day without getting a late mark or can be collected from 2pm from Town End			
Friday 2nd December – Elf Day, all classes making & creating Christmas treats for Christmas Fayre	😊	😊	😊	😊
Your child can dress up as an elf, wear a Christmas jumper, or wear Christmas clothes/colours to get into the Christmas spirit as their classrooms become Christmas workshops for the day!				

Thursday 8 th December, Christmas Jumper Day, £1 donation for Save the Children	😊	😊	😊	😊
Friday 9 th December 1pm-3pm, Christmas Fayre at Town End Juniors	😊	😊	😊	😊
Wednesday 14 th December, Carols at church – 9.30am Years 5 & 6 – 2pm Years 3 & 4 – parents welcome	😊	😊	😊	😊
Thursday 15 th December, Pantomime Dance Workshops (West End in Schools) CINDERELLA	😊	😊	😊	😊
Monday 19 th December, Christmas lunch	😊	😊	😊	😊
Tuesday 20 th December, Pantomime at The Derby Playhouse for all children in school - £13 per child - £15 for adult tickets, allocated on a first come basis <i>(School will pay for children in receipt of Pupil Premium funding but you must complete the online consent form)</i>	😊	😊	😊	😊
Thursday 22 nd December, Break up for Christmas holidays – collection from 1.15pm	😊	😊	😊	😊

MOBILE PHONES: We do not encourage children to bring mobile phones into school, however we respect that you may want your child to carry a mobile phone if they are walking to/from school. If your child brings a mobile phone or any other personal electronic device to school they must bring it up to the office when they arrive in school. The phone will be held securely until the end of the day when they may collect it just before they leave school. Personal mobile devices must not be used on the school site; if your child needs to contact you before they leave the site they will be able to use the school landline.

WATER BOTTLES: Please make sure your child comes to school every day with a bottle of fresh water. Please make sure your child gets into the habit of bringing their water bottle home after school so it can be refilled. Water bottles should be clearly named so your child can easily identify their bottle. **YOUR CHILD SHOULD ONLY HAVE WATER IN THEIR WATER BOTTLE. BOTTLES ARE ABLE TO BE REFILLED DURING THE SCHOOL DAY.**



UNIFORM: Uniform for both schools can now be ordered through the website under the tab “Tibshelf Schools” or you [can click here to place an order](#)

A lot of high street stores stock burgundy uniform, if that is a preferable option for you. Pre-owned uniform can be purchased or exchanged in the cabin at

Tibshelf Infants & Nursery School; there is a large amount of stock there (including larger sizes) in the boxes and hanging on the rail. This can be brought to Town End on request.

We keep a good stock of uniform at Tibshelf Infants, so usually what you have ordered will be at Town End within a couple of days. When you have paid your child's uniform will be given to them, but please remind us if this has not happened.

PLEASE MAKE SURE ALL UNIFORM IS CLEARLY NAMED AS THERE ARE ABOUT 200 CHILDREN IN SCHOOL CURRENTLY. Please also encourage your child to look after and respect their uniform; we will also do this in school as we know how many items of clothing are mislaid over a school week and end up in the lost property box. You are always welcome to check this; it is located just inside the doors off the small playground outside the wheelchair accessible toilet.

Please make sure your child comes to school every day with a waterproof and weatherproof coat. **NO SCARVES PLEASE.**

Please ensure your child brings a change of shoes or wellington boots to school in a bag on their outdoor learning day, especially as the weather is likely to change over the next few weeks.

HEADLICE: Please make sure you check your child's head on at least a weekly basis. It is really important that you treat your child's head immediately if you find any sign of headlice. You will be able to get further information Facebook @OnceAWeekTakeAPeek

Please find a list of dates below for the coming year. These will be added to as other events are arranged so please keep checking them on a weekly basis.

Day, date, time	Event
Week beginning 21 st November	Road Safety week, THE THEME THIS YEAR IS 'Safe Roads for All'
Tuesday 22 nd November	Rags to Riches clothing collection
Friday 25 th November	INSET Day, Special Educational Needs & Disability (SEND) staff training
Friday 2 nd December	Elf Day at Town End Junior School – all classrooms will become Christmas Workshops making & creating for The Christmas Fayre
Friday 2 nd December, from 8.15am and 2pm	The Friends Christmas Market at Tibshelf Infants – Santa and his reindeer, reindeer food on sale, Christmas ice cream van and more
Week beginning Monday 5 th December	Year 5/6 Bikeability – more information to follow
Thursday 8 th December 2.30pm	Singing performance by Mr. Smith's class, parents/carers of these children welcome to join us for this at school

Thursday 8th December	Christmas Jumper Day, £1 donation to Save the Children charity – children may also wear their Christmas jumpers for the last week of term.
Friday 9 th December, 1 – 3pm	Town End Christmas Fayre
Wednesday 14 th December 9.30am & 2pm	Christmas carols at church – parents/carers welcome to join 9.30am – Year 5/6 2pm – Year 1/2
Tuesday 20 th December	Pantomime at The Derby Playhouse, Aladdin – ALL CHILDREN WILL NEED TO BRING A PACKED LUNCH (if your child is in receipt of Pupil Premium funding school will provide a packed lunch if requested in advance)
Wednesday 21st December	Santa visiting school
Thursday 22 nd December	School break up for Christmas, collection from 1.15pm – no After School Care
Monday 27th February 2023	INSET Day, Focus TBA
Monday 26th June 2023	INSET Day, Focus TBA

Holidays during term time - You should not normally take your child on holiday during term time. GOV.UK has information on [what the law says about school attendance and absence](#).

Your child's safety, well-being and happiness will always be a top priority for us throughout the year. If there is something worrying your child, please let us know – little things can quickly escalate if they are not dealt with. If you are not able to speak to your child's class teacher at the beginning of the day please feel that you can catch me, Mrs. Alton or Chris or catch me around school if you have any concerns or worries about anything you feel may affect your child's education. It is very important we are kept informed so that we can ensure your child receives the best care and education. Please also remember to let us know if your immediate contact details change, especially mobile phone numbers.

If you ever need to make contact with school after we have closed please be aware that you can send a text via School Gateway App or by email, ZAndrews@townend.derbyshire.sch.uk I will usually pick up messages from both or one of these sources until about 9pm, and of course, if you need me to, I will contact you. Sometimes there may be something worrying or upsetting your child and you might not be able to get to the bottom of it – please do not feel you have to worry all night!

You can log onto our website at www.townend.derbyshire.sch.uk or contact us via email info@townend.derbyshire.sch.uk or ZAndrews@townend.derbyshire.sch.uk, or phone **01773 872306**. If we are not in the office when you phone you will hear a lovely answer phone message from one of our Year 6 pupils – just leave your message and we'll get back to you. Weekly newsletters can also be found on our website.

Have a good week,

Zoë